

## Manage sites with Dreamweaver: Setting up Media Queries

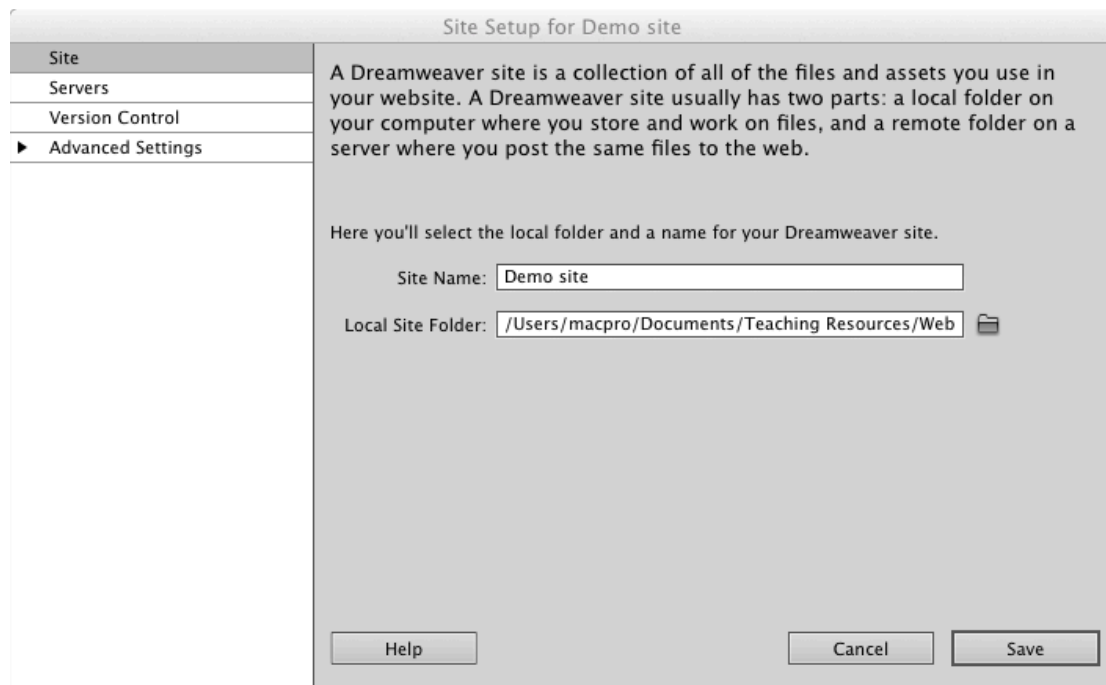
nigelbuckner 2013

With Dreamweaver it is possible to set up a CSS media query file along with the CSS documents required for screen size breakpoints (desktop, tablet and phone).

When using the method described here, DW creates a document referred to as a *media query* file. This is a CSS document, which in turn contains links to the CSS documents for each breakpoint.

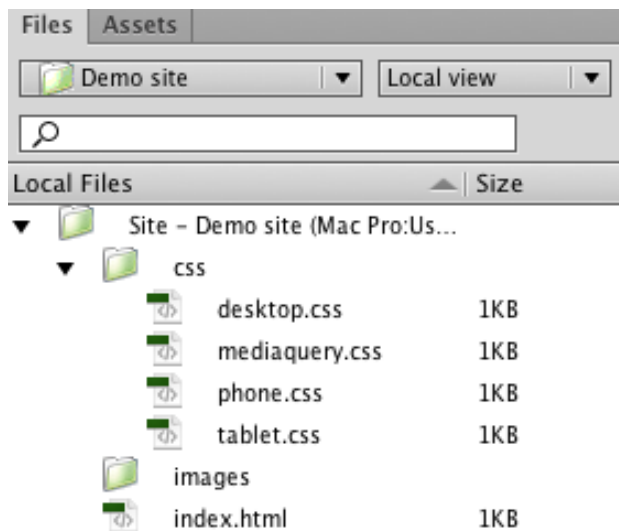
### Stage 1

To begin with, set up a site in Dreamweaver in the usual way by defining a root folder and locating it from the Site Setup window.



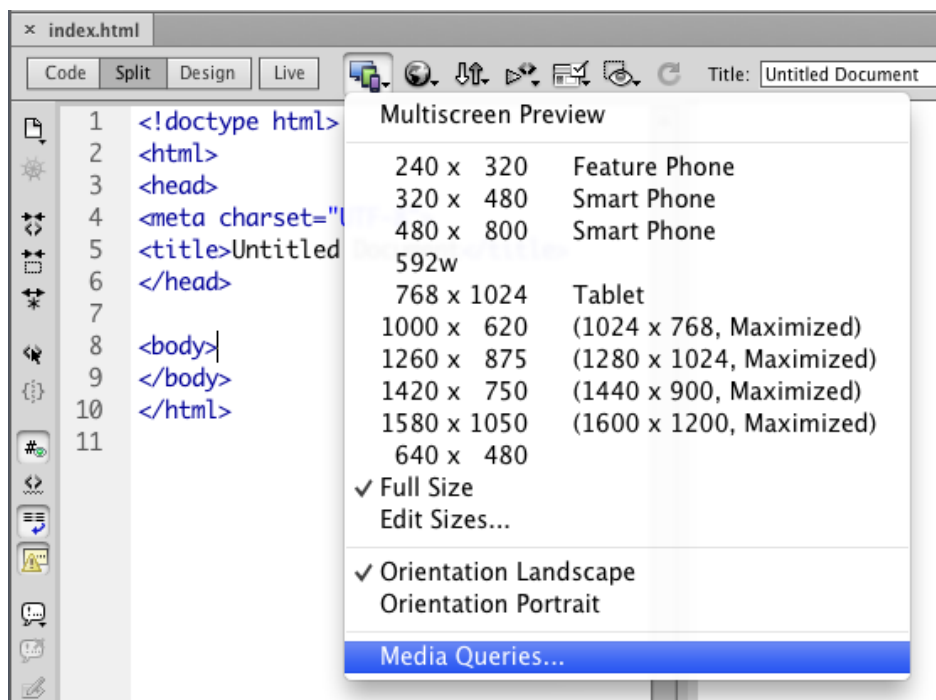
Then create site files and folders from the Files panel. As part of this, create a `mediaquery.css` file and the other files required for the desired breakpoints. For instance:

- `mediaquery.css`
- `desktop.css`
- `tablet.css`
- `phone.css`



## Stage 2

The next step is to locate the media query CSS and add the links to the CSS breakpoints files. To do this, open an html document from your site and either go to Modify > Media Queries... or choose Media Queries... from the Multiscreen button at the top of the document. This will open the Media Query dialogue.



Click on Specify to locate mediaquery.css. After this, select the radio button where it says *Site-wide media query file*.

Write media queries to:

☒ Site-wide media query file: *mediaquery.css*

Next, locate the CSS breakpoint files by clicking on the **+** button in the media queries window. Type a description e.g. *desktop*, define the min and/or max widths and locate the file.

Description	Media Query	CSS File
desktop	only screen and (min-width:960px)	css/desktop.css

+ -
Default Presets

**Properties**

Description:

Min Width:  px Max Width:  px

CSS File: Use existing file: ▼

Do likewise for the remaining CSS breakpoint files and click OK.

Description	Media Query	CSS File
desktop	only screen and (min-width:960px)	css/desktop.css
tablet	only screen and (min-width:640px) and (max-width:959px)	css/tablet.css
phone	only screen and (max-width:639px)	css/phone.css

+ -
Default Presets

A link to the media query CSS is now entered into the `<head>` of the html document as well as a `<meta>` tag that forces browsers to report their actual widths. You are now ready to commence entering content and creating CSS styles.

### *Remember*

When creating styles, be sure to save them to the correct CSS file. A typical approach would be to build the desktop version first and then commence with the other versions.